



لمتلس انجنييرنج ذ.م.م

LimitLess
Engineering LLC



www.limitlessengg.com

ABOUT Us

We are group of experienced engineers, consultants and advisors with over 20 years of extensive and hands-on experience in sophisticated and mega projects. The wide spread experience was among projects in KSA / UAE /Oman / Bahrain and Qatar.

We only target doing excellent designs, where we shall be referenced by our Clients to others due to our commitment for utmost Client Care, Best Design Concepts, Well Integrated and Coordinated Services, and yet Bespoke Courageous Solutions.

QFCA CERTIFIED. QFC NUMBER: 01650



MD's MESSAGE

Nidal F. Abdul Baki Founder / Managing Director

Through out my career, I have been lucky enough to have been exposed to all lines of Engineering Consultancy Fields, and worked on all types of projects, with all types of people at some of the most pioneering and innovative engineering firms in the market.



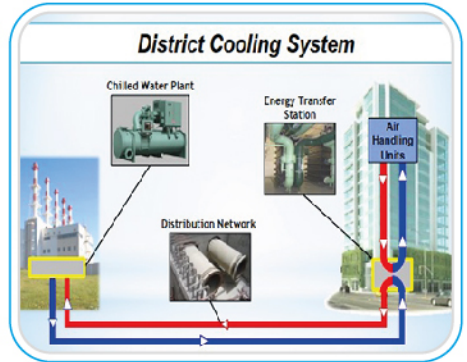
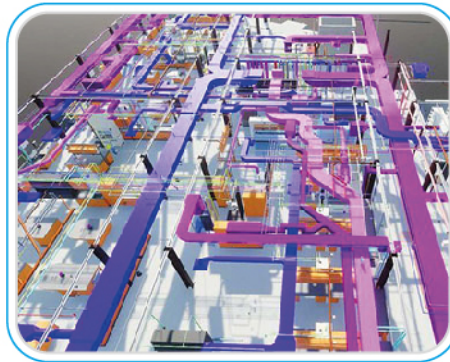
Being Honest and Sincere Partner with your Client is a rare currency in the Business World. For me, my reputation precedes me for being a very sincere technical educator for our clients where they see in me a highly credible reference when it comes to critical business and technical decisions. We thrive to keep this reputation high at Limitless Engineering, and I shall personally secure being the best partner for our repeated Clients by mastering the following attitudes and attributes:

- ☞ Ultimate and Utmost Client Care
- ☞ Technically up to date with the
- ☞ latest technologies and concepts and tools
- ☞ Reachable 24/7
- ☞ Fully aware of the AHJ's Latest
- ☞ Regulations
- ☞ Not VO Oriented

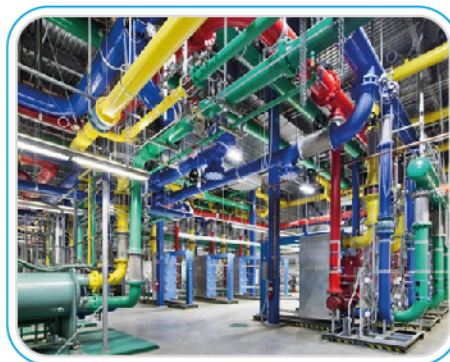
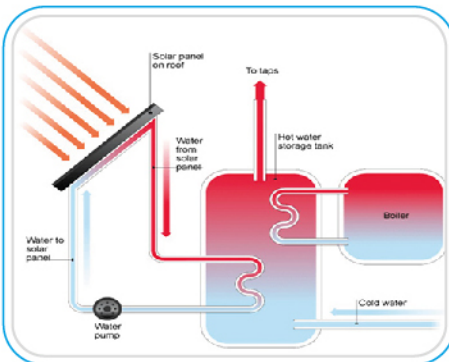
Finally, along with my close team, we have been referred to by our clients to new clients and then to new clients etc.... this referendum is future proof, and it did not come from nothing or nowhere. That's why I would urge all Real Estate Developers, Consultants, and Contractors to give us the chance to contribute to the success of your projects.

Our Services

MECHANICAL



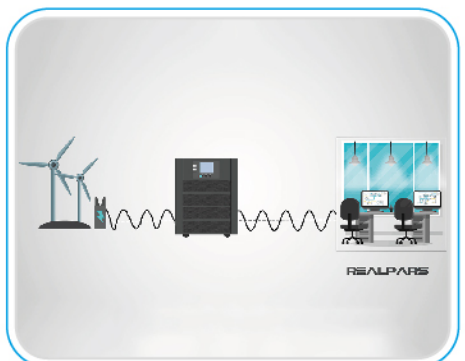
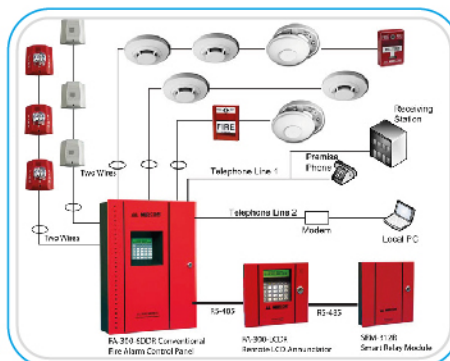
- ☞ Heating, Ventilation and Air Conditioning System
- ☞ Smoke Control Systems
- ☞ District Cooling Plants
- ☞ Outdoor Cooling and Climate Control
- ☞ CFD Analysis
- ☞ Industrial Deep Cooling Systems
- ☞ Cold and Hot Water Supply
- ☞ Solar Central Water Heating System
- ☞ RO System and Water Treatment Plants
- ☞ Irrigation System
- ☞ Fire Protection and Suppression
- ☞ Drainage (Sewage and Stormwater)
- ☞ Swimming Pool Filtration and HEAT/COOL PUMP Systems
- ☞ SNG and LPG
- ☞ Diesel System
- ☞ Medical Gases
- ☞ Laboratory Gases
- ☞ Compressed Air
- ☞ BMS System



Our Services



- ☞ MV/LV Substations
- ☞ LV Distribution Network
- ☞ Small Power Network
- ☞ Uninterrupted Power System
- ☞ Lighting Design and Control
- ☞ Interior Design Lighting / Façade Lighting / Landscape Lighting
- ☞ Street Lighting
- ☞ IT System (Passive and Active)
- ☞ Telephone and Data
- ☞ Smart and Audio-Visual Systems
- ☞ Home Automation
- ☞ Solar Power Generation (Photo-Voltaic Panels)
- ☞ Fire Alarm system
- ☞ CCTV System



Sectors



Residential Buildings & Palaces / Compounds



Commercial Offices Buildings



Mixed Use Buildings



Healthcare Buildings



Laboratories



Educational Facilities (Schools / Universities / Academies)



Hospitality Buildings



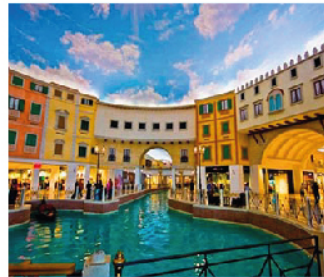
Industrial Buildings



Institutional Buildings



Museums / Auditoriums



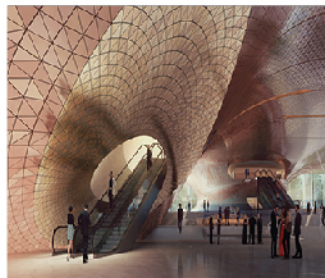
Shopping Malls



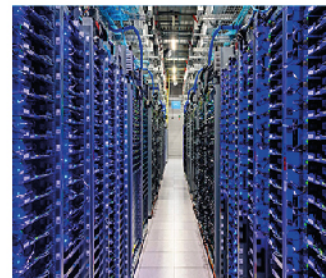
Recreational



Stadiums and Sports Facilities

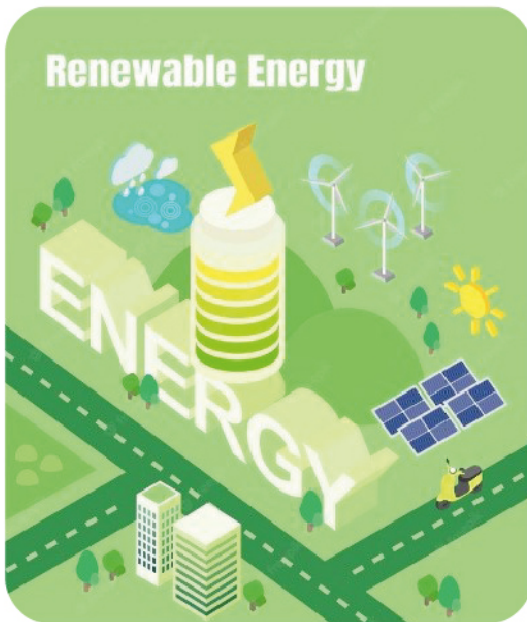


Public Buildings



Data Centers

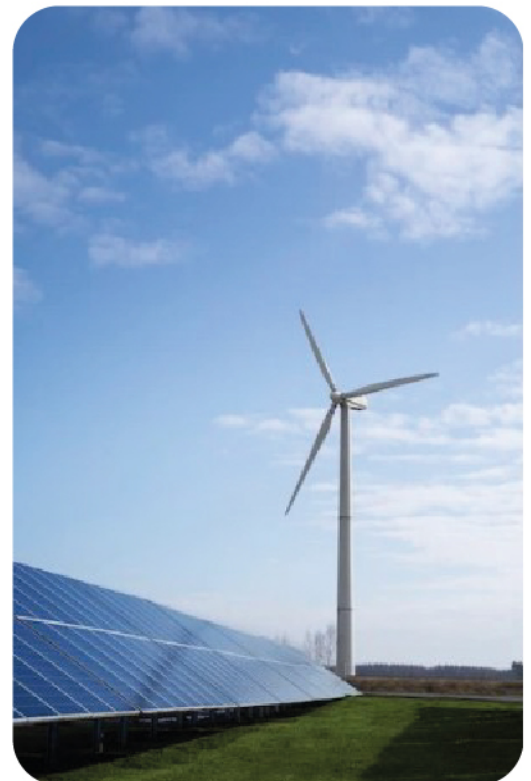
Net Zero Carbon Buildings



We distinguish ourselves from most of the Engineering Consultancy Firms, by being honest in our agenda for The Net Zero Carbon Buildings Concept. We thrive to design buildings which are Near Zero Carbon, since there is no actually Net Zero Carbon possibility.

As it is very well known, the Buildings Construction Industry contributes to around 40% of the Globe Energy related Carbon Emissions, hence we are aware of our responsibility to apply the strictest design measures helping in reducing the Carbon Footprint Emissions to the minimum

By default, our designs target the sustainability measures, however, we are closely monitoring the World, US and Local Green Buildings Counsels' Resolutions about the Sustainable Solutions and Commitments so that we shall contribute in saving our lovely earth a 1.4 ° C Temperature Increase.





لمتلس انجنييرنج ذ.م.م

LimitLess
Engineering LLC

Contact Us

+974 5577 2019

+97 4 41447212

nidal@limitlessengg.com

info@limitlessengg.com

www.limitlessengg.com

Burj Marina Lusail - Qatar
13th floor

Innovative | Sustainable | Integrated | Design



Limitless Engineering LLC / Boutique MEP Consultancy Firm

Prequalification Document

1. Introduction:

Limitless Engineering LLC is a young and dynamic boutique MEP Consultancy Firm based in Doha, Qatar. Although our company is less than a year old, our founders bring with them a vast and diverse experience of over 24 years in pioneering MEP firms in the Gulf and MENA Region. We have been involved in numerous MEGA Projects throughout our careers, demonstrating our capabilities in delivering high-quality and innovative engineering solutions.

2. Company Overview:

Limitless Engineering LLC was established to offer specialized Mechanical, Electrical, and Plumbing (MEP) consultancy services tailored to meet the unique needs of our clients. We are committed to providing cost-effective, sustainable, and energy-efficient solutions that ensure the success of every project we undertake.

3. Core Services:

Our core services include but are not limited to:

- MEP Design and Engineering
- FLS
- Feasibility Studies and Conceptual Design
- Value Engineering
- Retrofitting of MEP Systems in Existing Buildings

4. Founders' Experience:

The founders of Limitless Engineering LLC bring a wealth of experience to the table, having successfully executed a wide array of projects across the Gulf Region, including MEGA Projects. Our expertise covers various sectors, such as residential, commercial, industrial, hospitality, healthcare, and infrastructure.

5. Key Differentiators:

- a) In-depth Industry Knowledge: With over two decades of experience in the Gulf Region, we possess a profound understanding of local regulations, codes, and standards, ensuring compliance and streamlined project delivery.



- b) b) Innovative Solutions: Our team of skilled engineers is adept at employing cutting-edge technologies and industry best practices to develop innovative solutions that optimize project outcomes.
- c) Commitment to Sustainability: We prioritize sustainability and strive to incorporate eco-friendly practices into every project, reducing the carbon footprint and minimizing environmental impact.
- d) Customer-Centric Approach: At Limitless Engineering LLC, client satisfaction is at the core of our values. We maintain open communication, deliver projects on time and within budget, and foster long-lasting relationships with our clients.

6. Project Showcase:

While Limitless Engineering LLC is a young company, our founders' track record includes numerous landmark projects in the Gulf Region. Unfortunately, due to copyright issues, we are unable to directly showcase these projects in our current portfolio. However, we are more than willing to share detailed project case studies and references upon request, attesting to our capabilities and past successes.

Here are a short list of some prestigious projects on which we had the privilege to contribute and design:

- Shirvan Metisse Restaurant at Pearl Qatar for M/s UDC (this project has Outdoor Cooling of around 270m², where the system is unprecedented and the Client is stunned by the result, where almost zero energy is consumed at most of the time)
- Shopping mall at T Block, in Musheirib for M/s Musheirib Properties
- Bin Al Sheikh Twin Towers at Ramada Signal
- Lusail Presentation Centre; Lusail for Ms Qatari Diar
- Pneumatic Waste Collection Plants in Lusail for M/s Qatari Diar
- Labor Accommodation and Academic Building for M/s Qatar Armed Forces.
- Several Palaces, such as Al Rayyan Palace for Dr. Ali EL Feteis.
- HEC Paris Academy at Musheirib
- Microsoft Office Fit out design at Al Fardan Tower; Lusail Marina
- Chemical Warehouses at Qatar Free Zone for M/s FAST Logistics
- Various Commercial and Residential Towers at Lusail.



- Marble Medical Centre at Lagoon Mall
- Katara Hospitality Iconic Development, Lusail Area—Twin Towers Six and Five-Star Hotels
- The New Trauma and Emergency Department at Hamad Hospital (226 beds)
- 20,000 TR District Cooling Plant and Car Parking Building at Plot H, HMC
- National Health Laboratories for M/s Ashghal (NHL)
- Waldorf-Astoria Five-Star Hotel in West Bay (43-Storey Building)
- Umm Guwailina: Le Château Five-Star Hotel and Serviced Apartments
- 11 Residential Buildings Compound at Ras Abu Aboud for M/S Al Jabor Real Estate
- Garages and Labour Accommodation Compound at Industrial Area
- Wedding Hall Complex for the PEO
- Private palace complex, including all plant rooms and infrastructure, for Sheikh in Abu Dhabi
- New buildings for Sheikh at Al Rawdha Palace in Al Ain, including infrastructure
- 4 Hospitals for Ministry of Health at Riyadh, KSA
- Child and Mother Care Hospital; Dubai
- Warsan Hospital
- General Motors showroom and offices complex in Oman
- Al Jabal Al Akhdar Fishermen Village in Libya
- New Marriott hotel and serviced apartments building in Abu Dhabi
- Najaf Airport terminal 2, Najaf, Iraq
- Al Ghamama Museum, Al Madeena, KSA
- DGFC IVF center, Latifa hospital, Dub
- Mirdif Hospital, Dubai
- Basra Hospital, Basra
- Hayat Place, Dubai
- Hotel/Reis Palm Jumeirah



- G+30 IRIS Crystal tower
- G+26 Commercial tower
- The OPUS. Commercial tower in business bay Dubai.
- Waterfront Development. Dubai
- 9H Marina Tower. Dubai
- THE PAD Business bay. Dubai
- Al Ghurair Mall & city expansion. Dubai
- Al Warsan Hospital and Medical Center , DUBAI
- Marriot Mixed Used (Hotel, Service, Residential) Development, DUBAI
- DEIRA WATERFRONT DEVELOPMENT (Residential, Commercial, Cinema),DUBAI
- ESCARPMENT RESORT AND WADI HANIFAH HOTEL, RIYADH
- Lusail Formula One Circuit; Lighting Electrical System Upgrade
- International School of Kinshasa ; Congo-Africa; MEP Design
- International School of Brazzaville; Congo; MEP Design; Ongoing project
- Several Towers in Pearl; Storm water Segregation Study as per UDC requirements.
- Beverly Hills Compound; Review of storm water system and upgrading a viable design.
- Several Towers in Pearl and Lusail - Doha; Review of HVAC Systems finding out root causes of Humidity Issues and proposing viable solutions.
- Naser Al sayer car storage and showroom , Jafza
- Bahawani GMC Showroom in Muscat Oman
- Qatar Automobile Services
- Classical Cars Museum in Qatar
- Riyadh Bank HQ-KAFD; Design Review and Validation + Shop Drawings + BIM Development
- SRMG; Review of MEP Specifications + Shop Drawings - KAFD - Riyadh / KSA
- Waldorf Astoria Hotel Clubhouse Rooftop Outdoor Cooling Design -Doha -Qatar



- Siemens Energy Office - Jeddah- KSA; MEP + FLS Design
- Microsoft Riyadh Office and Innovation Hub - KSA ; MEP + FLS Design
- Jeddah Airport (KAIA: South Terminal Rehabilitation); MEP Shop Drawings
- Pulse Ice Bath and Sauna – London – UK; MEP Design
- Four Seasons Residential Hotel - Jeddah - KSA; Review of MEP Design
- Riyadh Bank HQ @ KAFD - Riyadh - KSA; Fit-out Design of MEP + FLS Services for 7th and 8th Floors
- Al Arabiya TV Studio in Riyadh – KSA - MEP Design Review.
- Pulse Sauna and Ice Bath – Fulham – UK; Design of MEP Services.
- Waldorf Astoria Resort in Lusail – Qatar; Resolution of HVAC Problems in its Entrance Lobby in relation to proper cooling loads consideration and Air Balance etc.
- SAP Riyadh Offices at Misk City – Riyadh; Design of MEP/ELV/ICT/AV systems in BIM.
- Five Star Hotel and Hotel Villas in Abu Dhabi; Redesign of MEP Systems as per ID Package.
- Jeddah Airport South Terminal Rehabilitation: Check In Hall Smoke Management Design and CFD Analysis.

7. Financial Stability:

As a startup, we recognize the importance of financial stability in building trust with our clients. We assure you that we have a robust financial foundation, with sustainable business practices and sufficient resources to undertake projects of varying scales and complexities.

8. Certifications and Accreditations:

Limitless Engineering LLC is in the process of acquiring relevant certifications and accreditations to further enhance our credibility and competency. Our team members are committed to continuous professional development to stay up to date with industry advancements.

9. Project Prequalification Request:

We kindly request that our company, Limitless Engineering LLC, be considered for prequalification in your list of preferred MEP Consultancy Firms. We are confident that our experience, expertise, and dedication will make us valuable partners in your esteemed projects.



لمتلس انجنيئرنج ذ.م.م
LimitLess
Engineering LLC

Thank you for considering Limitless Engineering LLC. We look forward to the opportunity to collaborate with your organization and contribute our skills and knowledge to the success of your projects.

Sincerely,

Nidal Abdul Baki | Founder & Managing Director | Limitless Engineering LLC